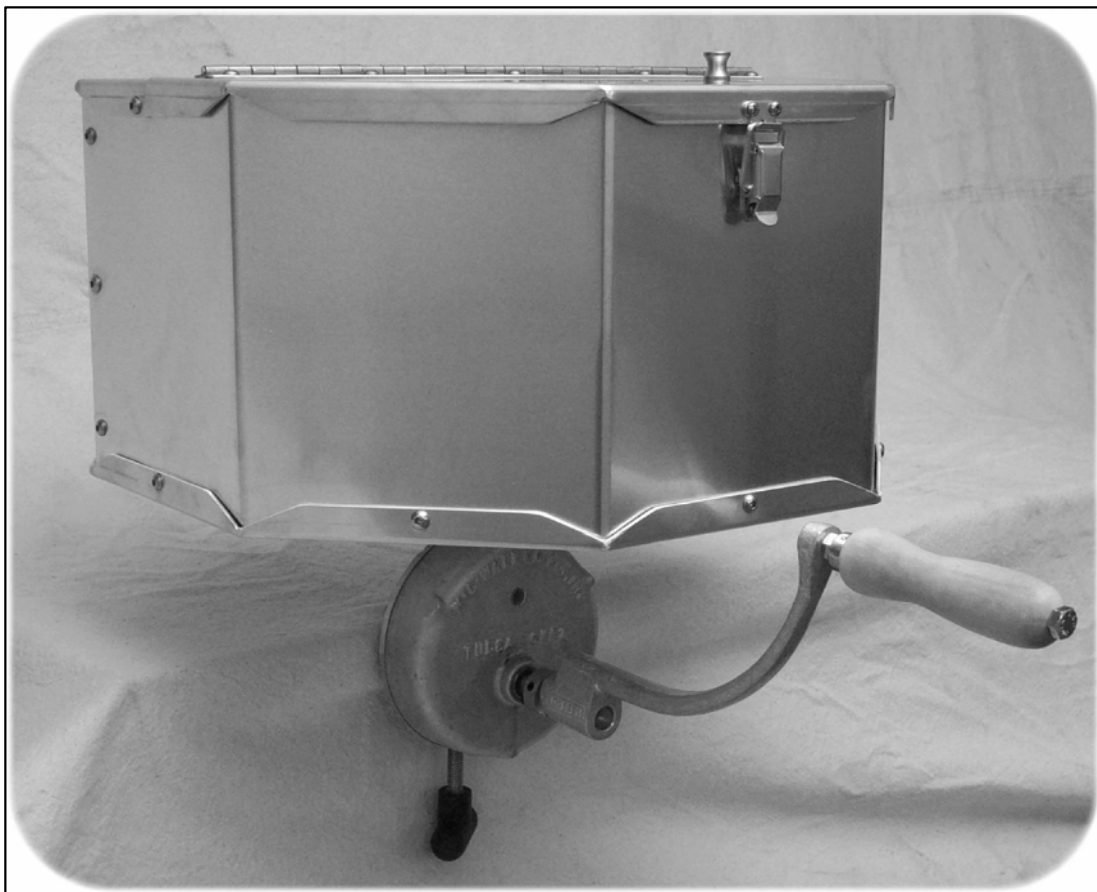


# Instructions for Installation & Operation of #18897 Enclosure

March 15, 2006



# Index

Page 1) Installation Instructions

Page 2) #18836 'Crank Assembly' drawing

Page 3) Exploded View of Assembly drawing

Page 4) Assembled View drawing

Page 5) Notes on operation of Hand Centrifuge with 18897 Enclosure

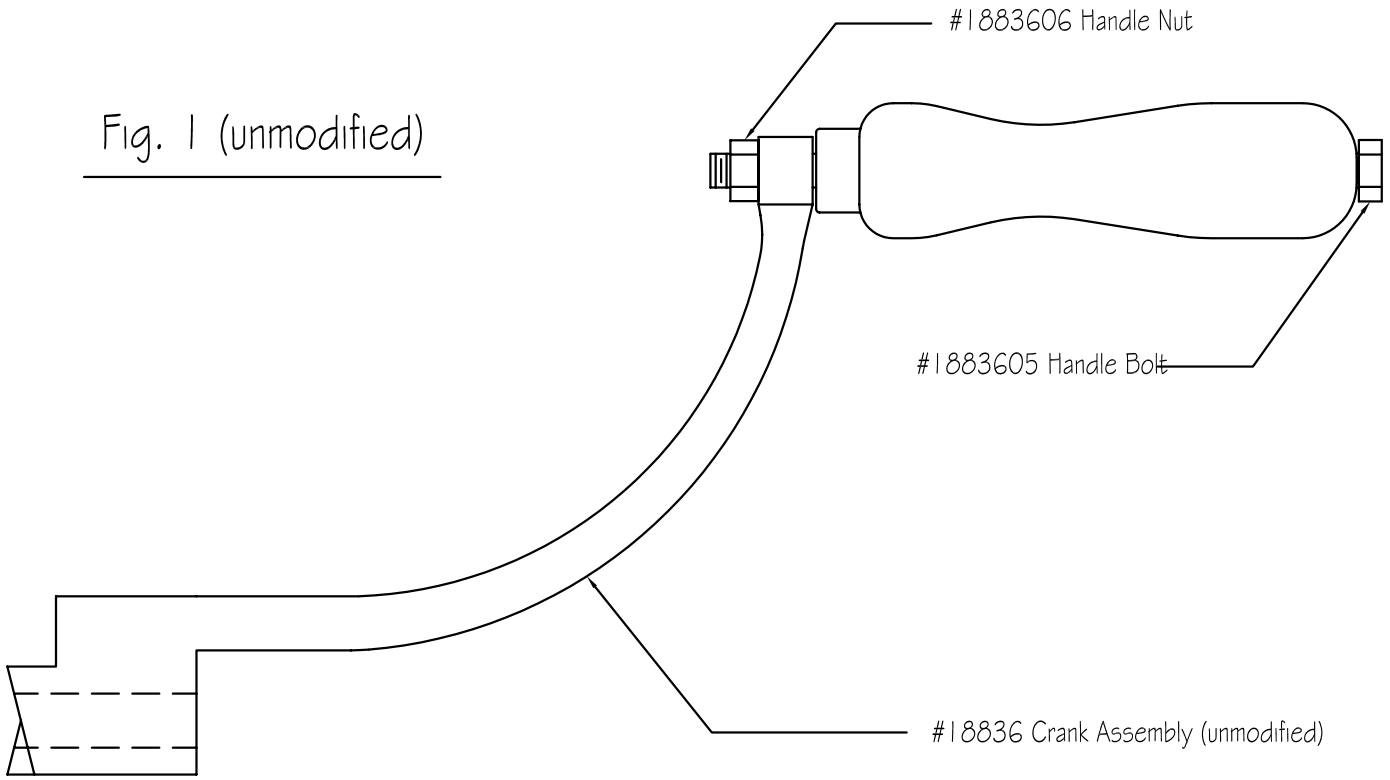
## Installation Instruction for #18897 Enclosure

---

Note: new Hand Driven Centrifuges supplied with the #18897 Enclosure need no modification and are ready to use as received. Older units may be easily retrofitted to use the #18897 Enclosure by following the simple steps listed below.

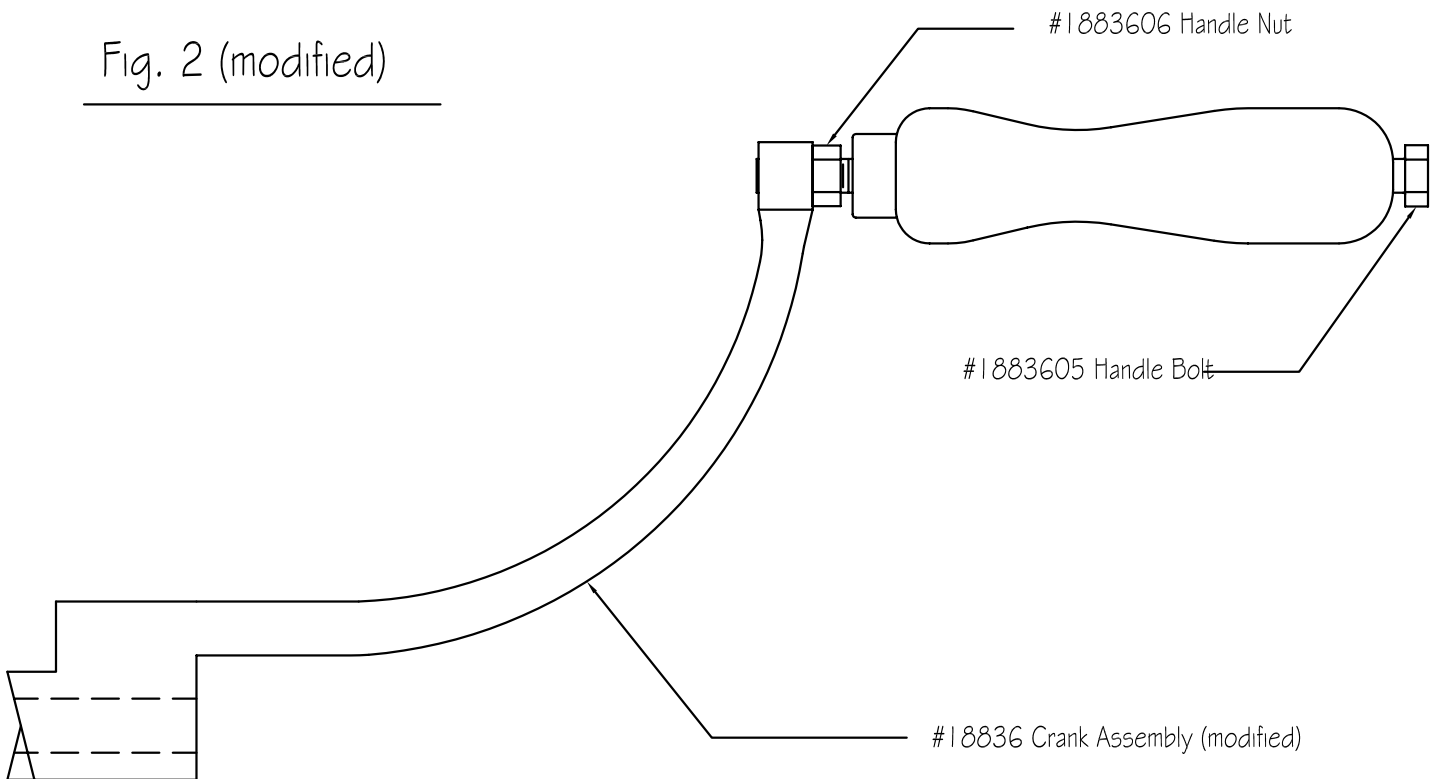
- 1) Modify the #18836 'Crank Assembly' as shown on pg. #2 Fig. 1 & 2 for proper clearance of 'Crank Assembly' to 'Enclosure'. (1/2" wrench required)
- 2) Install #18898 'Crank Shaft Adapter'
  - A) slide adapter onto #1883101 'Crank Shaft' toward the #1883607 'Clutch Pin' and rotate to engage the drive lugs of the adapter against the 'Clutch Pin' and tighten the set screw using a 1/8" hex key.  
(installing the #18898 'Crank Shaft Adapter' allows for more clearance of the 'Crank Assembly' as it passes the lower edge of 'Enclosure' while still giving a positive drive of the 'Crank Shaft'.)
- 3) Install #18897 Enclosure (see pg. #3 Fig. 3 for exploded view of assembly)
  - A) slide 'Enclosure' down over the #18835 'Shaft Housing Assembly' and allow it to come in contact with the top of the #1883002 'Body'.
  - B) using the modified #18836 'Crank Assembly', 'square' the 'Enclosure' to the Centrifuge assembly by slowly rotating the 'Crank Assembly' and checking for equal clearance at the front edge of the 'Enclosure'.
  - C) tighten the 2 set screws in the #18895 'Mounting Hub' using 1/8" hex key.
- 4) Check installation against drawing on page 4 Fig. 4 (assembled view)

Fig. 1 (unmodified)



To modify, remove # 1883606 'Handle Nut' and #1883605 'Handle Bolt' and install as shown below in the modified view.

Fig. 2 (modified)



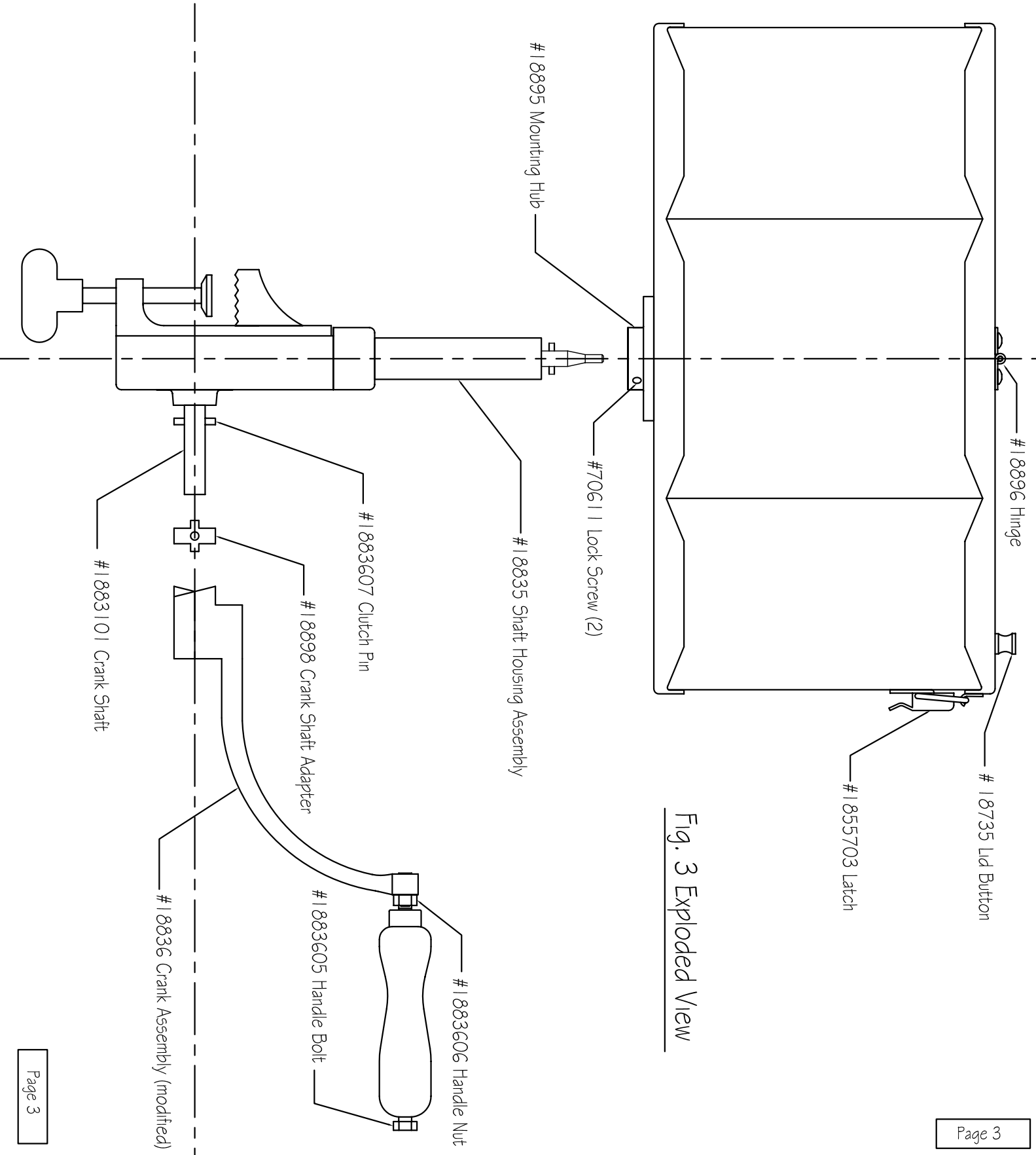


Fig. 3 Exploded View

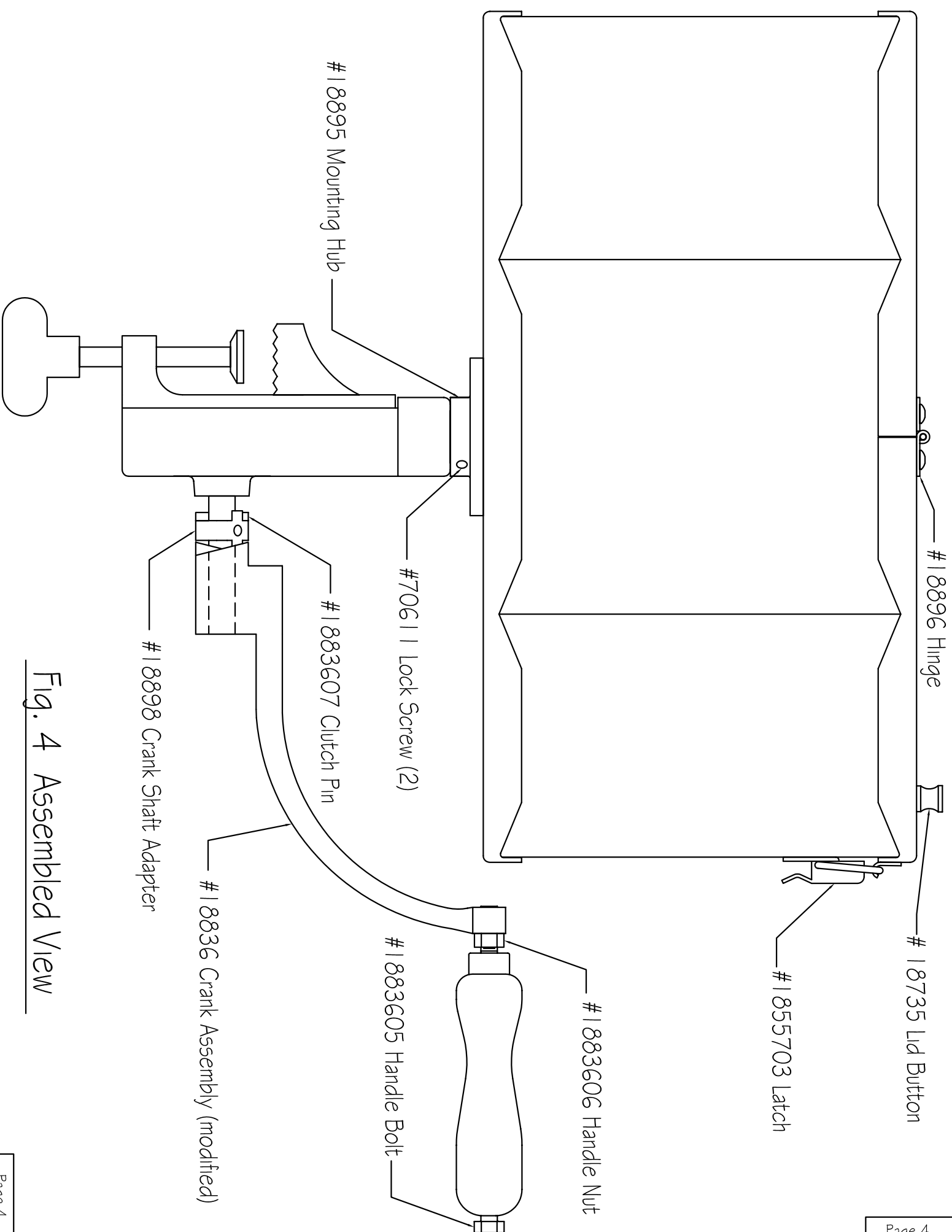


Fig. 4 Assembled View

## Notes on Operation of Hand Centrifuge with 18897 Enclosure

- 1) Close and latch lid before operating centrifuge.
- 2) The #18897 Enclosure will allow the head to spin more freely and the cranking to be easier due to much reduced wind resistance.
- 3) The #18836 Crank Handle should not exceed two (2) cranks per second. Two (2) cranks per second will achieve approx. 1920 RPM which should be sufficient RCF for all head styles.
- 4) Never use the #18897 Enclosure Housing for leverage while cranking the centrifuge as this can cause the #18835 'Shaft Housing Assembly' to become loose in the #1883002 'Body'.